

TL 6975 69kV Power Line Route Mapbook - Photo Points

Legend

Project Alignment

Segment 1 - Rebuild

Segment 2 - New Build

Segment 3 - Reconductor

Project Features

Stringing Site

General Features

Existing Substation

Interstate

State Highway

Railroad

City Boundary

County Boundary

Mapbook Page

01,0002,0003,0004,0005,000

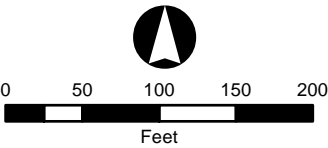
Feet



TL 6975 69kV Power
Line Route Mapbook -
Photo Points

Legend

- Project Structures**
- Pier Foundation
 - Direct Bury
 - Overhead Work
 - Existing structure re-energize conductors
 - Possible Work / No Work
 - Remove From Service
 - Rack
 - Guard Structures
- Project Alignment**
- Segment 1 - Rebuild
 - Segment 2 - New Build
 - Segment 3 - Reconductor
- Project Features**
- Access Road
 - Stringing Site
 - Staging Yard
- General Features**
- Interstate
 - State Highway
 - Railroad
 - Existing Substation
 - City Boundary
 - County Boundary





**TL 6975 69kV Power
Line Route Mapbook -
Photo Points**

Legend

Project Structures

- Pier Foundation
- Direct Bury
- Overhead Work
- Existing structure re-energize conductors
- Possible Work / No Work
- Remove From Service
- Rack
- Guard Structures

Project Alignment

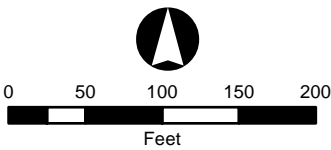
- Segment 1 - Rebuild
- Segment 2 - New Build
- Segment 3 - Reconductor

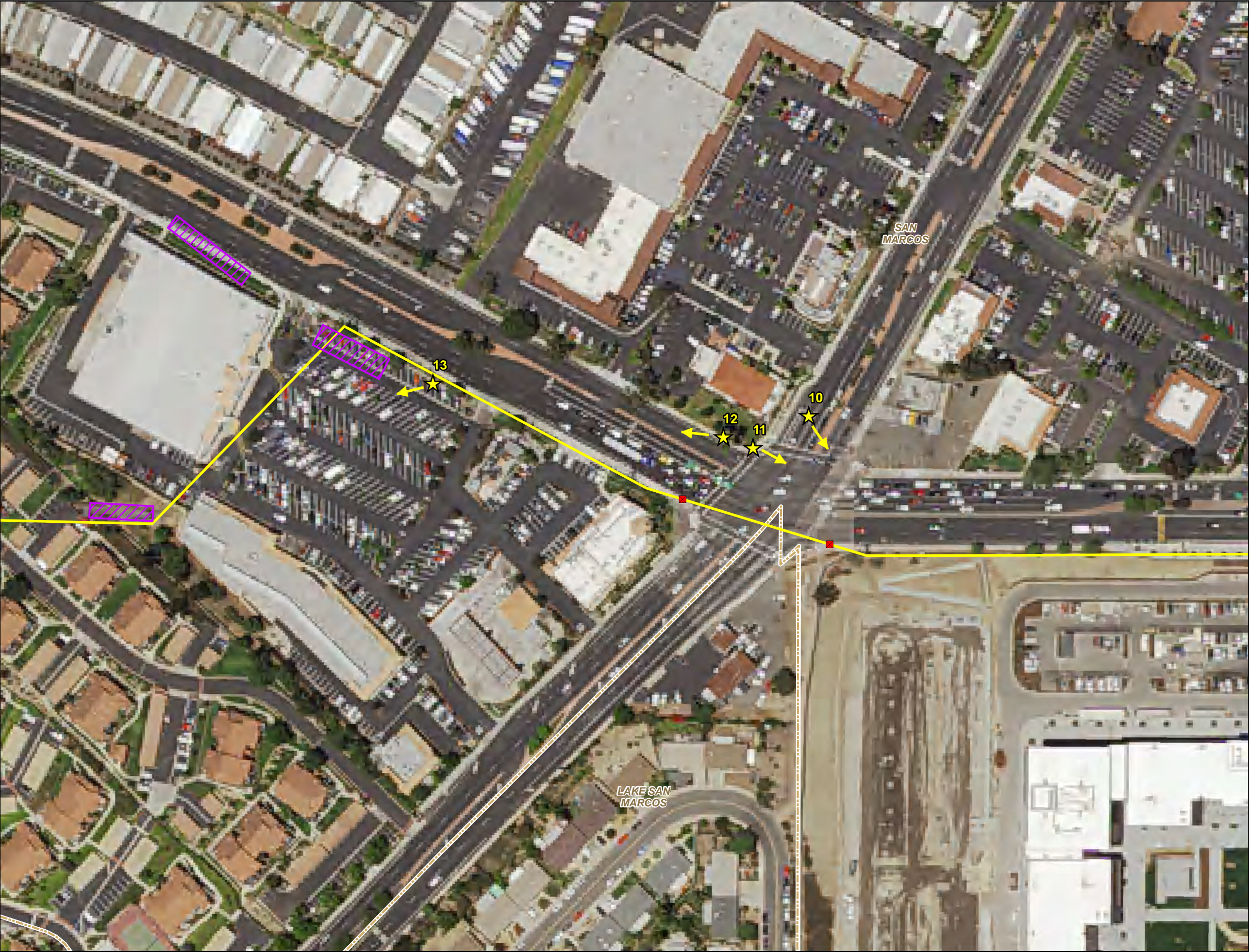
Project Features

- Access Road
- Stringing Site
- Staging Yard

General Features

- Interstate
- State Highway
- Railroad
- Existing Substation
- City Boundary
- County Boundary





TL 6975 69kV Power Line Route Mapbook - Photo Points

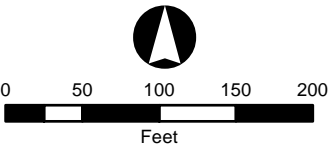
Legend

- Project Structures**
- Pier Foundation
 - Direct Bury
 - Overhead Work
 - Existing structure re-energize conductors
 - Possible Work / No Work
 - Remove From Service
 - Rack
 - Guard Structures

- Project Alignment**
- Segment 1 - Rebuild
 - Segment 2 - New Build
 - Segment 3 - Reconductor

- Project Features**
- Access Road
 - Stringing Site
 - Staging Yard

- General Features**
- Interstate
 - State Highway
 - Railroad
 - Existing Substation
 - City Boundary
 - County Boundary





TL 6975 69kV Power
Line Route Mapbook -
Photo Points

Legend

Project Structures

Pier Foundation

Direct Bury

Overhead Work

Existing structure re-energize conductors

Possible Work / No Work

Remove From Service

Rack

Guard Structures

Project Alignment

Segment 1 - Rebuild

Segment 2 - New Build

Segment 3 - Reconductor

Project Features

Access Road

Stringing Site

Staging Yard

General Features

Interstate

State Highway

Railroad

Existing Substation

City Boundary

County Boundary

050100150200

Feet

Page 4



**TL 6975 69kV Power
Line Route Mapbook -
Photo Points**

- Legend**
- Project Structures**
- Pier Foundation
 - Direct Bury
 - Overhead Work
 - Existing structure re-energize conductors
 - Possible Work / No Work
 - Remove From Service
 - Rack
 - Guard Structures
- Project Alignment**
- Segment 1 - Rebuild
 - Segment 2 - New Build
 - Segment 3 - Reconductor
- Project Features**
- Access Road
 - Stringing Site
 - Staging Yard
- General Features**
- Interstate
 - State Highway
 - Railroad
 - Existing Substation
 - City Boundary
 - County Boundary



**TL 6975 69kV Power
Line Route Mapbook -
Photo Points**

Legend

Project Structures

- Pier Foundation
- Direct Bury
- Overhead Work
- Existing structure re-energize conductors
- Possible Work / No Work
- Remove From Service
- Rack
- Guard Structures

Project Alignment

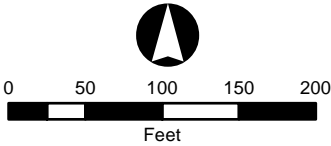
- Segment 1 - Rebuild
- Segment 2 - New Build
- Segment 3 - Reconductor

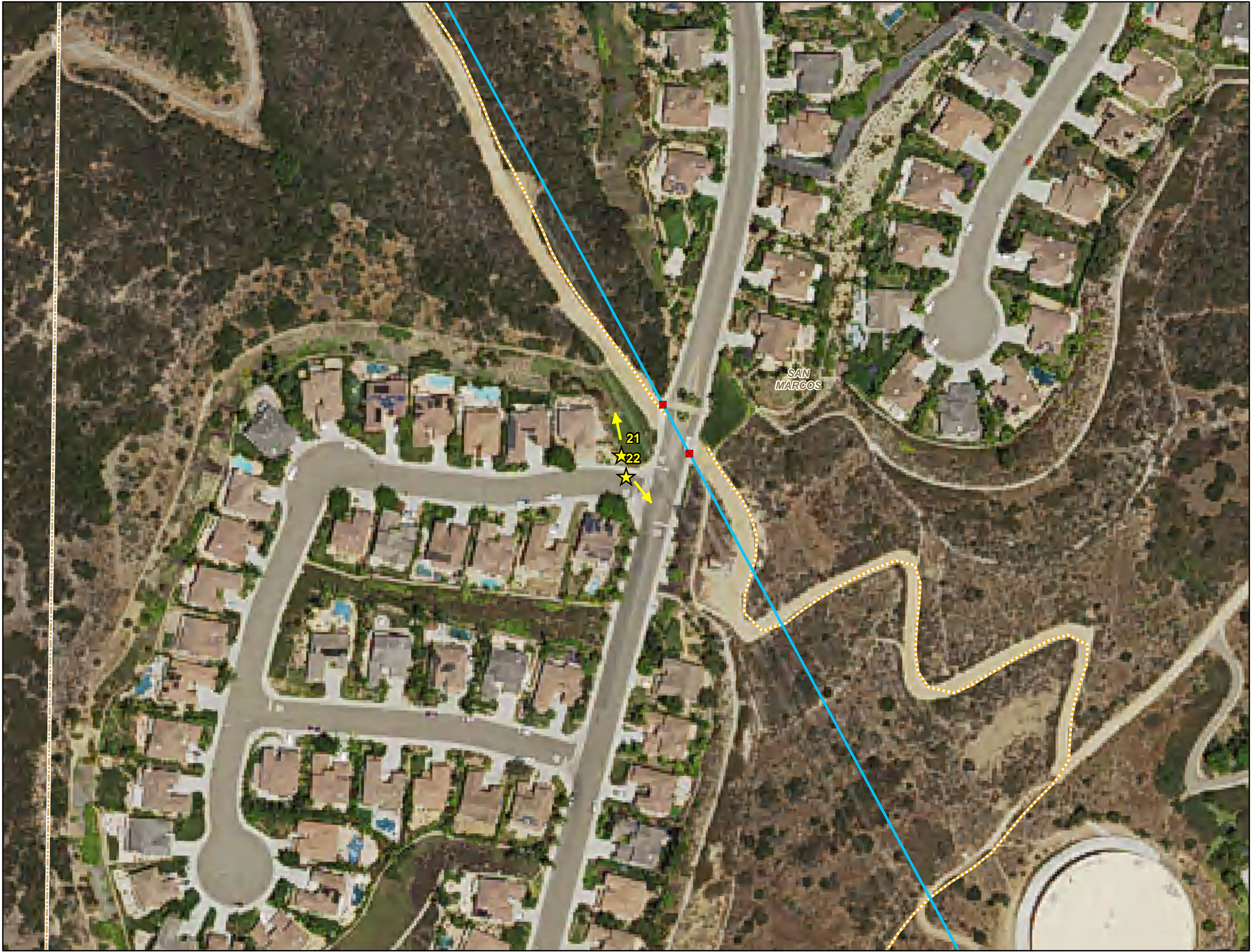
Project Features

- Access Road
- Stringing Site
- Staging Yard

General Features

- Interstate
- State Highway
- Railroad
- Existing Substation
- City Boundary
- County Boundary





TL 6975 69kV Power
Line Route Mapbook -
Photo Points

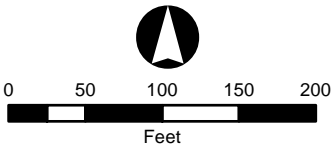
Legend

- Project Structures**
- Pier Foundation
 - Direct Bury
 - Overhead Work
 - Existing structure re-energize conductors
 - Possible Work / No Work
 - Remove From Service
 - Rack
 - Guard Structures

- Project Alignment**
- Segment 1 - Rebuild
 - Segment 2 - New Build
 - Segment 3 - Reconductor

- Project Features**
- Access Road
 - Stringing Site
 - Staging Yard

- General Features**
- Interstate
 - State Highway
 - Railroad
 - Existing Substation
 - City Boundary
 - County Boundary

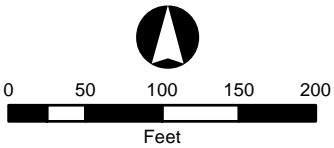




**TL 6975 69kV Power
Line Route Mapbook -
Photo Points**

Legend

- Project Structures**
- Pier Foundation
 - Direct Bury
 - Overhead Work
 - Existing structure re-energize conductors
 - Possible Work / No Work
 - Remove From Service
 - Rack
 - Guard Structures
- Project Alignment**
- Segment 1 - Rebuild
 - Segment 2 - New Build
 - Segment 3 - Reconductor
- Project Features**
- Access Road
 - Stringing Site
 - Staging Yard
- General Features**
- Interstate
 - State Highway
 - Railroad
 - Existing Substation
 - City Boundary
 - County Boundary





TL 6975 69kV Power
Line Route Mapbook -
Photo Points

Legend

Project Structures

Pier Foundation

Direct Bury

Overhead Work

Existing structure re-energize conductors

Possible Work / No Work

Remove From Service

Rack

Guard Structures

Project Alignment

Segment 1 - Rebuild

Segment 2 - New Build

Segment 3 - Reconductor

Project Features

Access Road

Stringing Site

Staging Yard

General Features

Interstate

State Highway

Railroad

Existing Substation

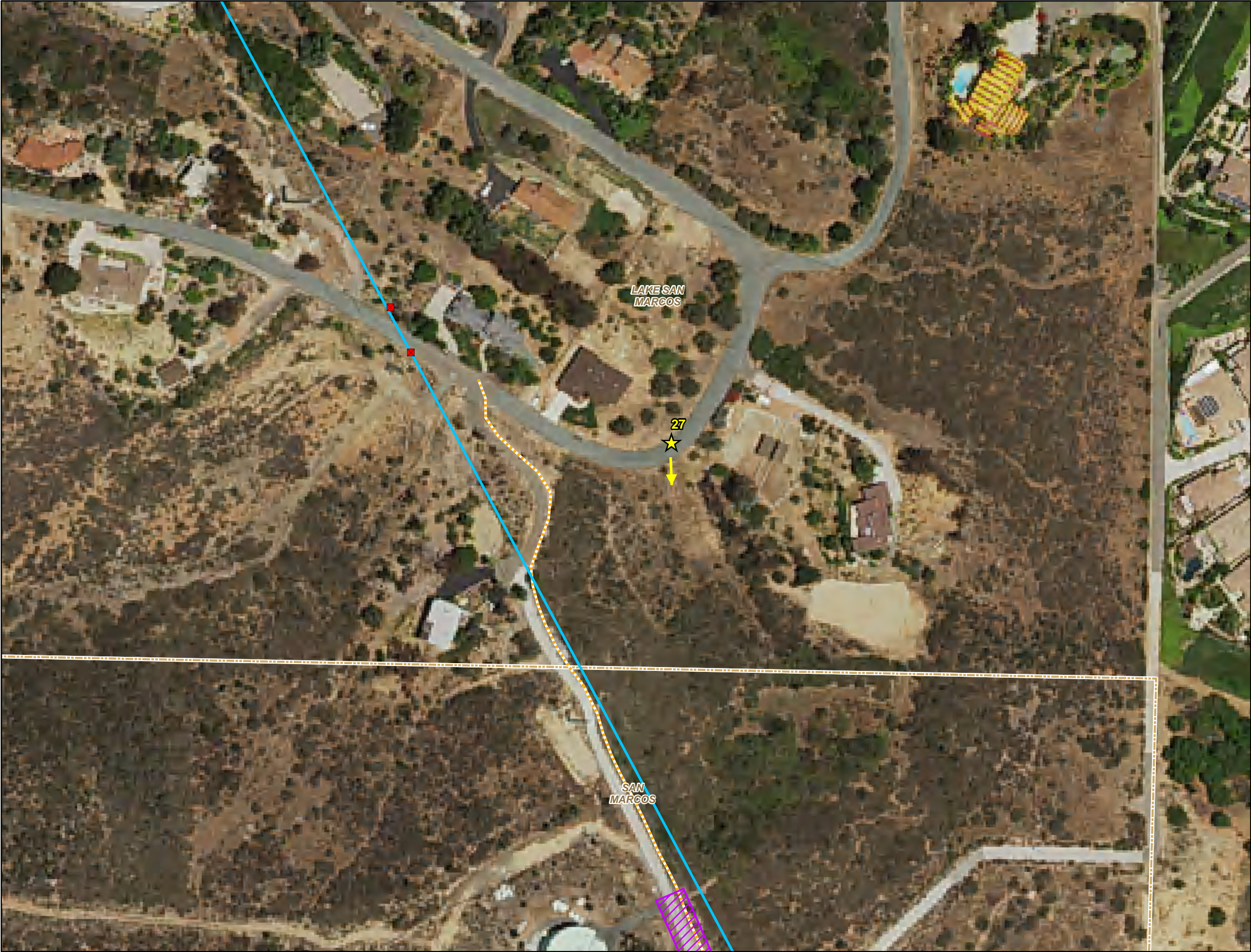
City Boundary

County Boundary

050100150200

Feet

Page 9



TL 6975 69kV Power
Line Route Mapbook -
Photo Points

Legend

Project Structures

Pier Foundation

Direct Bury

Overhead Work

Existing structure re-energize conductors

Possible Work / No Work

Remove From Service

Rack

Guard Structures

Project Alignment

Segment 1 - Rebuild

Segment 2 - New Build

Segment 3 - Reconductor

Project Features

Access Road

Stringing Site

Staging Yard

General Features

Interstate

State Highway

Railroad

Existing Substation

City Boundary

County Boundary

050100150200

Feet

Page 10



TL 6975 69kV Power
Line Route Mapbook -
Photo Points

Legend

Project Structures

- Pier Foundation
- Direct Bury
- Overhead Work
- Existing structure re-energize conductors
- Possible Work / No Work
- Remove From Service
- Rack
- Guard Structures

Project Alignment

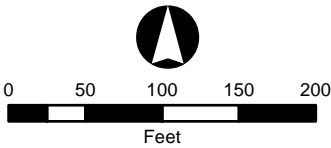
- Segment 1 - Rebuild
- Segment 2 - New Build
- Segment 3 - Reconductor

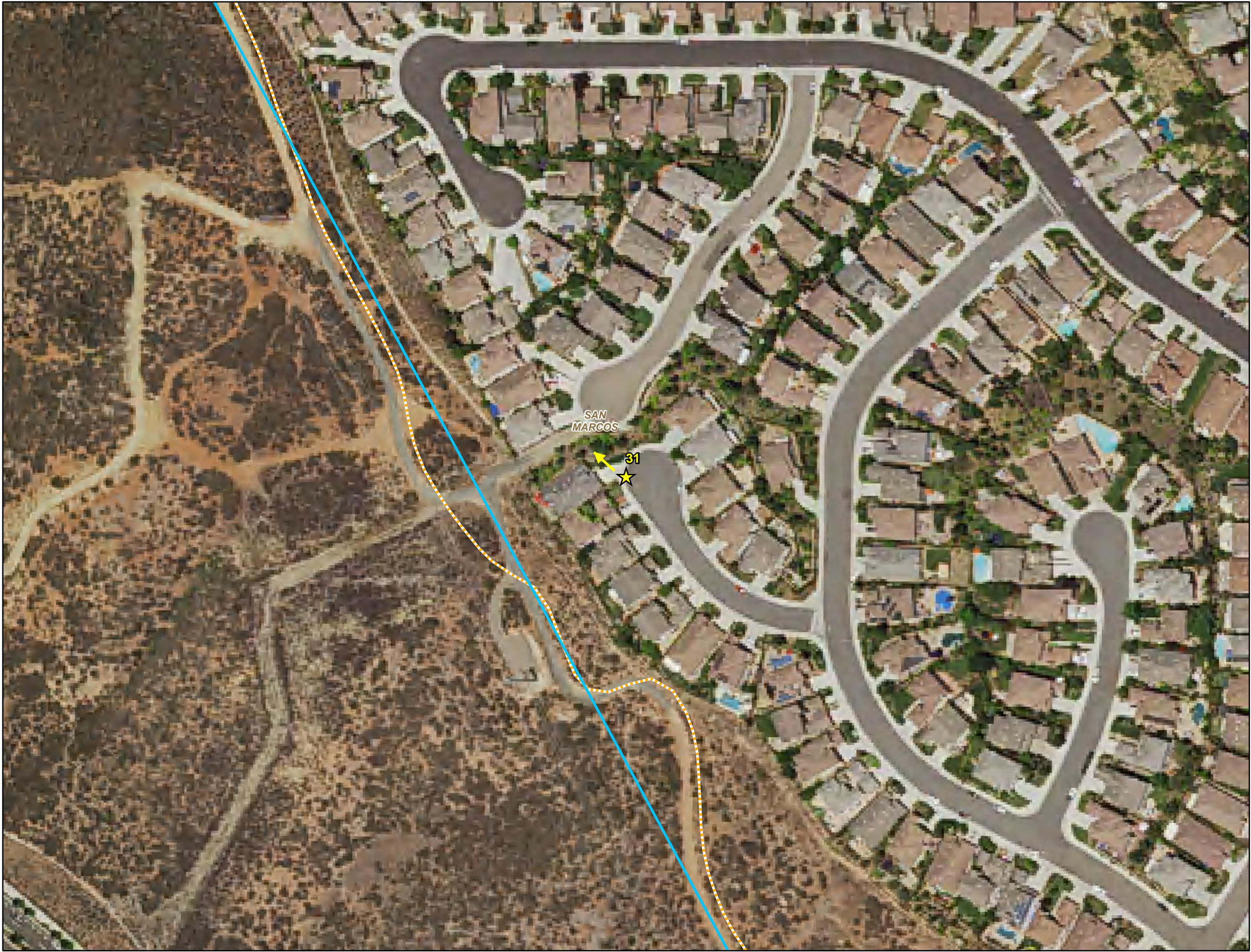
Project Features

- Access Road
- Stringing Site
- Staging Yard

General Features

- Interstate
- State Highway
- Railroad
- Existing Substation
- City Boundary
- County Boundary

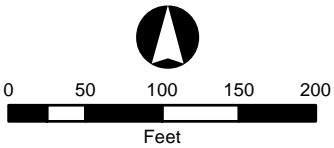


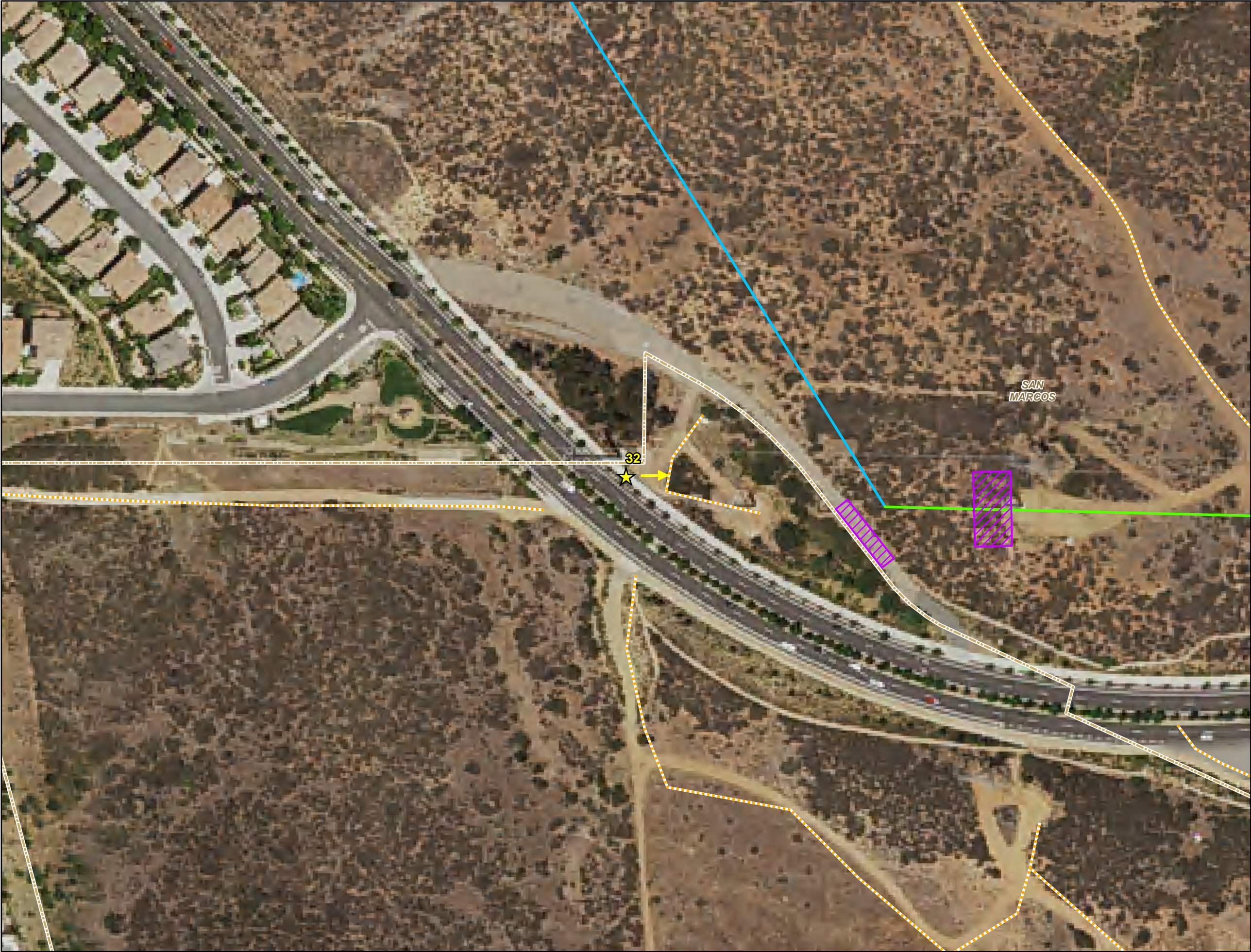


**TL 6975 69kV Power
Line Route Mapbook -
Photo Points**

Legend

- Project Structures**
- Pier Foundation
 - Direct Bury
 - Overhead Work
 - Existing structure re-energize conductors
 - Possible Work / No Work
 - Remove From Service
 - Rack
 - Guard Structures
- Project Alignment**
- Segment 1 - Rebuild
 - Segment 2 - New Build
 - Segment 3 - Reconductor
- Project Features**
- Access Road
 - Stringing Site
 - Staging Yard
- General Features**
- Interstate
 - State Highway
 - Railroad
 - Existing Substation
 - City Boundary
 - County Boundary





TL 6975 69kV Power
Line Route Mapbook -
Photo Points

Legend

Project Structures

Pier Foundation

Direct Bury

Overhead Work

Existing structure re-energize conductors

Possible Work / No Work

Remove From Service

Rack

Guard Structures

Project Alignment

Segment 1 - Rebuild

Segment 2 - New Build

Segment 3 - Reconductor

Project Features

Access Road

Stringing Site

Staging Yard

General Features

Interstate

State Highway

Railroad

Existing Substation

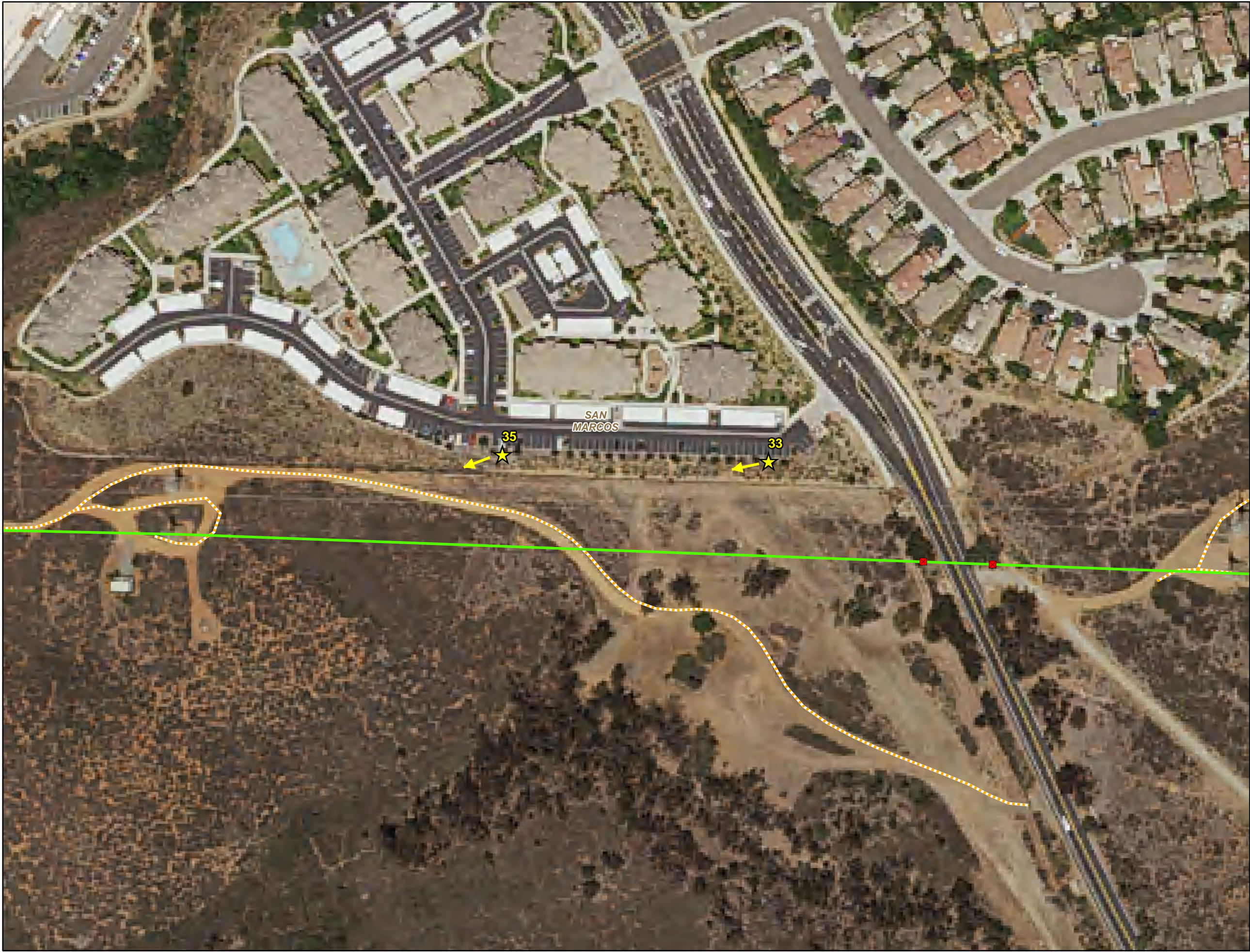
City Boundary

County Boundary

050100150200

Feet

Page 13



TL 6975 69kV Power
Line Route Mapbook -
Photo Points

Legend

Project Structures

Pier Foundation

Direct Bury

Overhead Work

Existing structure re-energize conductors

Possible Work / No Work

Remove From Service

Rack

Guard Structures

Project Alignment

Segment 1 - Rebuild

Segment 2 - New Build

Segment 3 - Reconductor

Project Features

Access Road

Stringing Site

Staging Yard

General Features

Interstate

State Highway

Railroad

Existing Substation

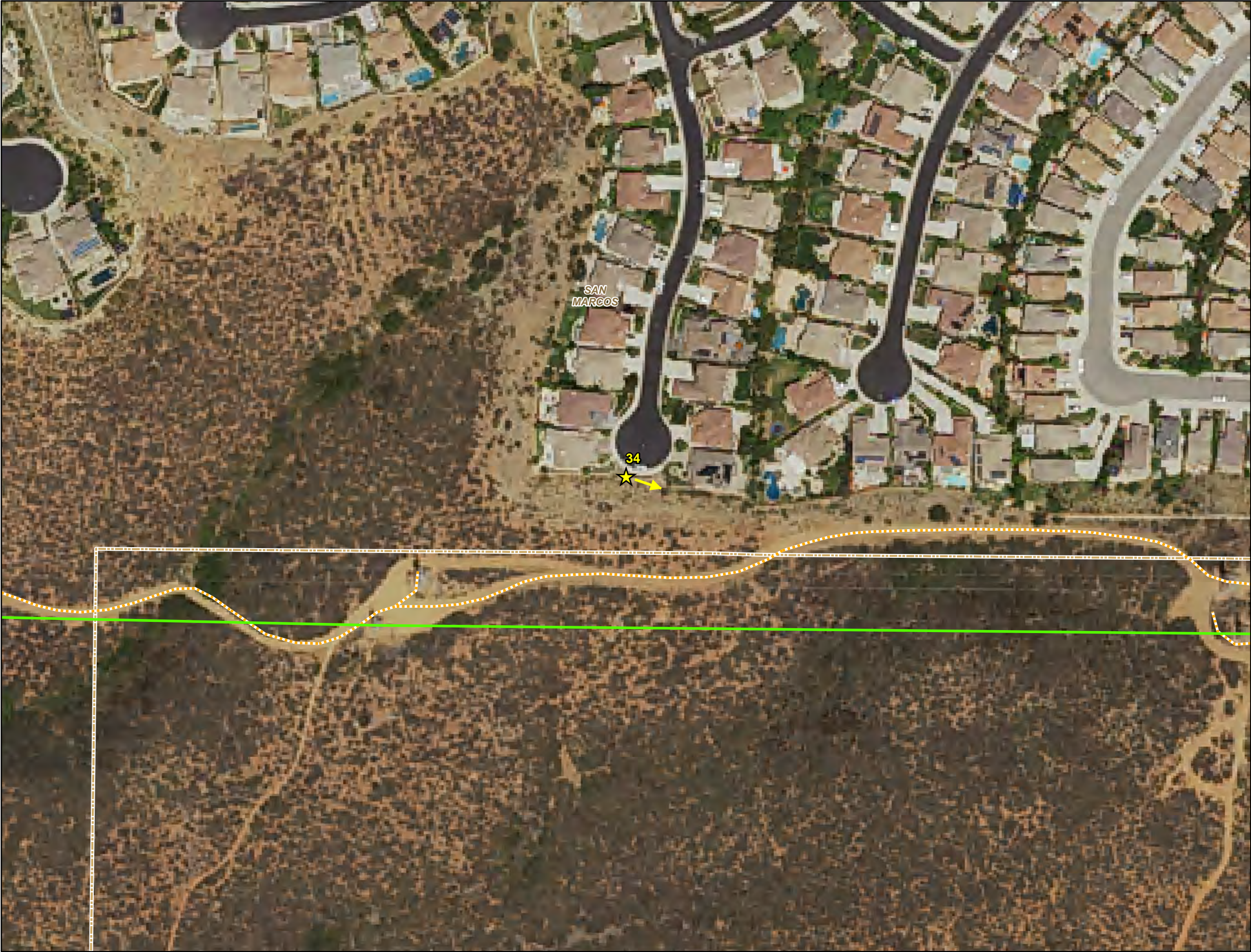
City Boundary

County Boundary

050100150200

Feet

Page 14



TL 6975 69kV Power
Line Route Mapbook -
Photo Points

Legend

Project Structures

Pier Foundation

Direct Bury

Overhead Work

Existing structure re-energize conductors

Possible Work / No Work

Remove From Service

Rack

Guard Structures

Project Alignment

Segment 1 - Rebuild

Segment 2 - New Build

Segment 3 - Reconductor

Project Features

Access Road

Stringing Site

Staging Yard

General Features

Interstate

State Highway

Railroad

Existing Substation

City Boundary

County Boundary

050100150200

Feet

Page 15



TL 6975 69kV Power
Line Route Mapbook -
Photo Points

Legend

Project Structures

Pier Foundation

Direct Bury

Overhead Work

Existing structure re-energize conductors

Possible Work / No Work

Remove From Service

Rack

Guard Structures

Project Alignment

Segment 1 - Rebuild

Segment 2 - New Build

Segment 3 - Reconductor

Project Features

Access Road

Stringing Site

Staging Yard

General Features

Interstate

State Highway

Railroad

Existing Substation

City Boundary

County Boundary

050100150200

Feet

Page 16



**TL 6975 69kV Power
Line Route Mapbook -
Photo Points**

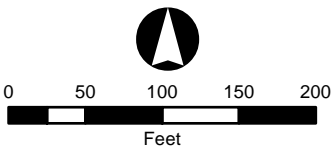
Legend

- Project Structures**
- Pier Foundation
 - Direct Bury
 - Overhead Work
 - Existing structure re-energize conductors
 - Possible Work / No Work
 - Remove From Service
 - Rack
 - Guard Structures

- Project Alignment**
- Segment 1 - Rebuild
 - Segment 2 - New Build
 - Segment 3 - Reconductor

- Project Features**
- Access Road
 - Stringing Site
 - Staging Yard

- General Features**
- Interstate
 - State Highway
 - Railroad
 - Existing Substation
 - City Boundary
 - County Boundary

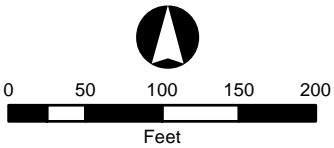




**TL 6975 69kV Power
Line Route Mapbook -
Photo Points**

Legend

- Project Structures**
- Pier Foundation
 - Direct Bury
 - Overhead Work
 - Existing structure re-energize conductors
 - Possible Work / No Work
 - Remove From Service
 - Rack
 - Guard Structures
- Project Alignment**
- Segment 1 - Rebuild
 - Segment 2 - New Build
 - Segment 3 - Reconductor
- Project Features**
- Access Road
 - Stringing Site
 - Staging Yard
- General Features**
- Interstate
 - State Highway
 - Railroad
 - Existing Substation
 - City Boundary
 - County Boundary





TL 6975 69kV Power
Line Route Mapbook -
Photo Points

Legend

Project Structures

Pier Foundation

Direct Bury

Overhead Work

Existing structure re-energize conductors

Possible Work / No Work

Remove From Service

Rack

Guard Structures

Project Alignment

Segment 1 - Rebuild

Segment 2 - New Build

Segment 3 - Reconductor

Project Features

Access Road

Stringing Site

Staging Yard

General Features

Interstate

State Highway

Railroad

Existing Substation

City Boundary

County Boundary

050100150200

Feet

Page 19



TL 6975 69kV Power
Line Route Mapbook -
Photo Points

Legend

Project Structures

- Pier Foundation
- Direct Bury
- Overhead Work
- Existing structure re-energize conductors
- Possible Work / No Work
- Remove From Service
- Rack
- Guard Structures

Project Alignment

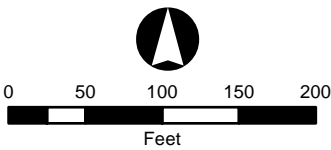
- Segment 1 - Rebuild
- Segment 2 - New Build
- Segment 3 - Reconductor

Project Features

- Access Road
- Stringing Site
- Staging Yard

General Features

- Interstate
- State Highway
- Railroad
- Existing Substation
- City Boundary
- County Boundary





TL 6975 69kV Power
Line Route Mapbook -
Photo Points

Legend

Project Structures

- Pier Foundation
- Direct Bury
- Overhead Work
- Existing structure re-energize conductors
- Possible Work / No Work
- Remove From Service
- Rack
- Guard Structures

Project Alignment

- Segment 1 - Rebuild
- Segment 2 - New Build
- Segment 3 - Reconductor

Project Features

- Access Road
- Stringing Site
- Staging Yard

General Features

- Interstate
- State Highway
- Railroad
- Existing Substation
- City Boundary
- County Boundary

